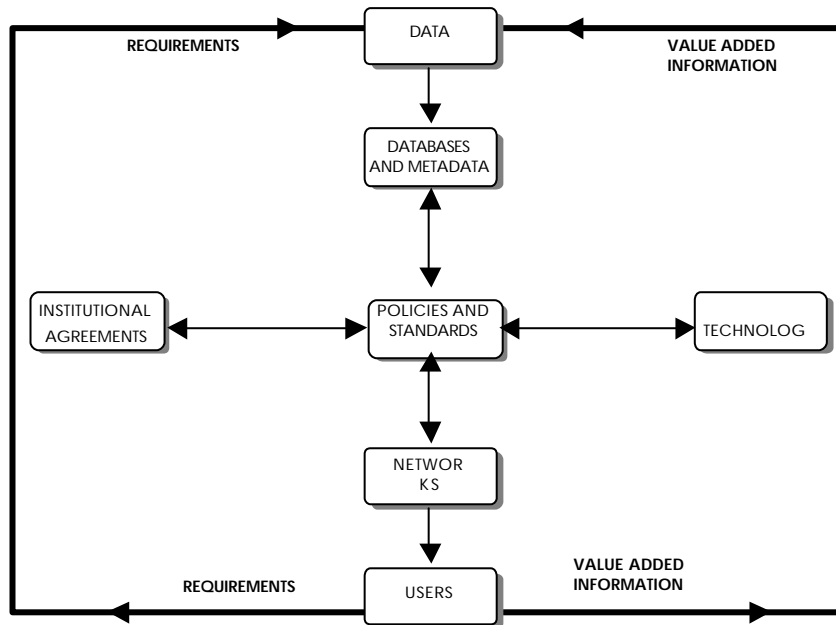


National Geospatial Data Infrastructure of Venezuela

The National Geospatial Data Infrastructure of Venezuela, INDG, integrates the policies, technology, standards and human resources needed for the collection, handling, accessing, distribution and use of geospatial data at national level.



It is a cooperative effort to create a widely accessible geospatial data source of the whole country, to be used by a variety of users; it provides the basic data and the necessary environment to support its development and use. The INDG represents the best available information of an area, certified, normalized and described based on a common standard. It is designed to serve as a geospatial base in which the organizations at the national level may add the information they require in order to satisfy their own needs.

The main INDG objectives are:

- To facilitate opportune decision making based on reliable and accurate information
- To reduce costs associated with the production and maintenance of geospatial data, sharing the investments and avoiding duplication of efforts, making possible the reorientation of the resources associated with these tasks.
- To provide a wide geospatial data access at the lowest cost possible, increasing user' satisfaction by given better data and faster answers to their demands.

The involvement of governmental agencies, the private sector, universities and technological institutes, and the users make the consolidation of the INDG a project of national importance.

These organizations may adhere the INDG by means of four levels of participation.

Level 0 comprises the common users that access the INDG to browse or to buy data.

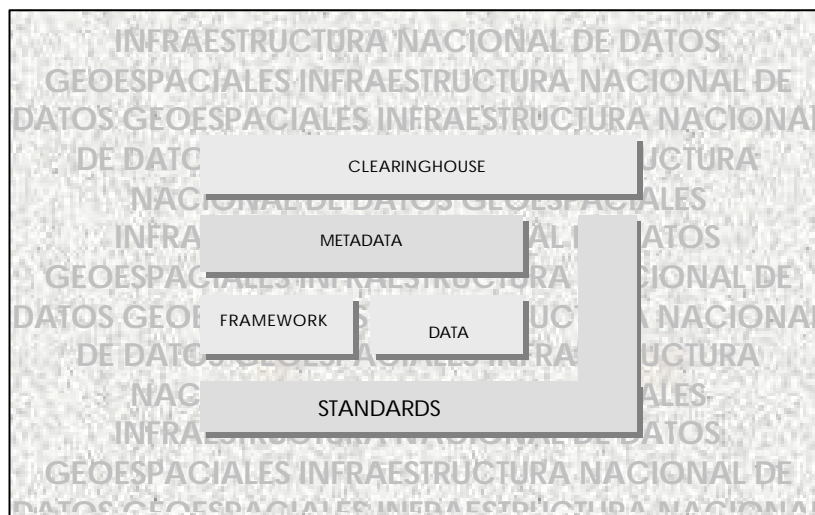
Level 1 includes the regular users that will participate actively in the definition of data priorities and in the development of applications connected with the INDG.

Level 2 is formed by the organizations that contribute with data to the Infrastructure and wish to participate in standard definition, data exchange protocols' normalization and priorities' creation for the construction of the INDG.

Level 3 is the core of INDG, constituted by the public and private agencies in charge of the administration of the Infrastructure. They share risks and rewards, managing the network and setting the policies, standards and procedures for the implementation and maintenance of the INDG.

INDG Contents

The National Clearinghouse is a fundamental element for the achievement of INDG objectives. It is a web-based system consisting of software, standards and institutions, created to provide access, evaluation and processing of geospatial data. Its main objective is to allow the distribution of geospatial data to the users in a reliable and opportune way at the lowest cost possible.



Metadata, information about information, allows the producer to describe in detail the contents of the geospatial data, and gives to the users the essential tools to know, understand and evaluate this information.

The INDG geographic data is structured in six layers or themes:

- Geodesy
- DTM
- Orthoimages
- Drainage
- Transportation
- Boundaries

Based on its importance as a tool for planning the use of the resources and decision making, cadastral information is planned to be included in the short term as another theme of the INDG.

These six layers are to be developed according to levels of resolution and coverage of the geospatial data.

- Level I: National level, scales 1:25 000 to 1: 100 000
- Level II : State level, scales 1:10 000 to 1:25 000
- Level III : Local level, scales 1:1 000 to 1:10 000

Data levels I and II will be completed during the first ten years of INDG implementation process.

The consistency of data will be maintained to ensure the integration of the different themes in a continuous base of georeferenced information.

The quality assurance procedures and criteria are to be public and fully documented. Certified data become official information with all the legal implications of this particular.